

# DM 8500 V4.3.1 Release Note

## 1. DM Designer V4.3.1 for Windows Release Notes

### Version Compatibility

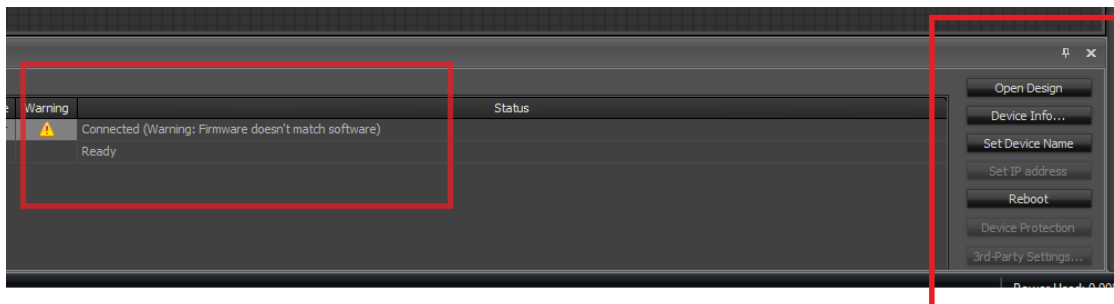
Firmware/ Designer Version	Publish Date	Publisher	Version Compatibility List
DM Designer V4.3.1	2022/7/22	Xibo.luo	<ol style="list-style-type: none"><li>1. All DM8000 firmware versions.</li><li>2. DM8500 firmware V3.2.X.X</li><li>3. DM8500 firmware V3.3.X.X</li><li>4. DM8500 firmware V3.5.X.X</li><li>5. DM8500 firmware V3.6.X.X</li><li>6. DM8500 firmware V3.7.X.X</li><li>7. DM8500 firmware V3.8.X.X</li><li>8. DM8500 firmware V4.2.X.X</li><li>9. DM8500 firmware V4.3.X.X</li></ol>
DM firmware V4.3.0.3	2022/7/8	Asar Chen	Designer version: V4.3.X.X

### System Requirements for Software

OS	Windows 10 (32-bit/64-bit)
CPU	Pentium/Athlon 2GHz or faster (dual core processor recommended)
Memory	1 GB or more
Interface	Ethernet Port

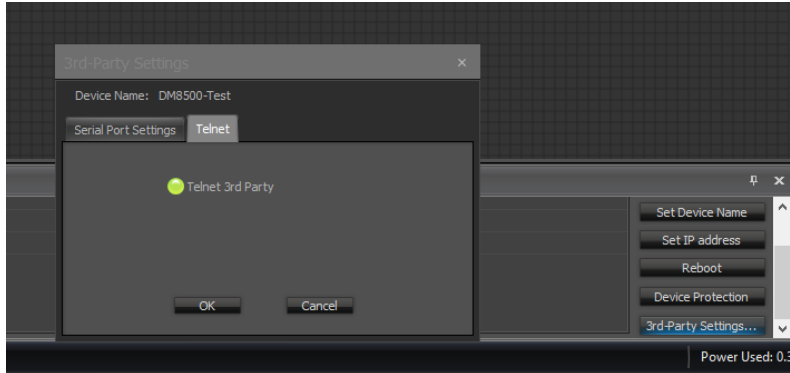
### New Features

1. Add “Warning message” for DM8500 incompatible version when firmware doesn’t match software.



- a. Connected display “ Warning: Firmware doesn’t match software”
- b. Set Ip address / Device Protection / 3rd-party Setting options are disabled for incompatible version.

2. Support Telnet 3<sup>rd</sup> Party, you can open this function in DM Designer->Deivce Panel->3rd-Party Setting.



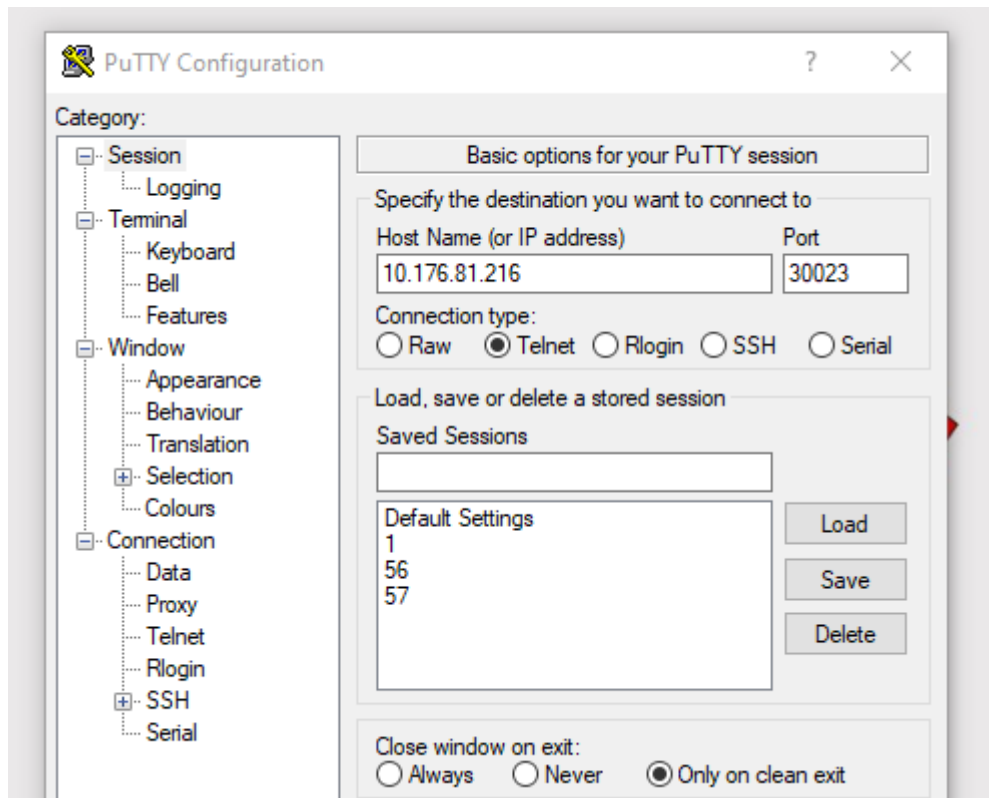
## 2. DM8500 V4.3.0.3 Firmware Release Notes

### New Features

- Firmware supports Telnet 3<sup>rd</sup> Party, so need upgrade the Firmware to 4.3.0.3.

**Note:** the port is 30023

**Case 1 :** Telnet connection for un- protection device.



```
10.176.81.216 - PuTTY
Welcome to the DM8500 Text Potocol Server...
Try 'help' for more information.
3rdStart
rd control start:
set input1 input_level 1 12
@ok pitch command okay !
█
```

**Case 2 :** Telnet connection for Enable Protection device.

```
10.176.80.57 - PuTTY
Welcome to the DM8500 Text Potocol Server...
Try 'help' for more information.
3rdStart
rd control start:
please input the correct username and password
username admin
Please input the password
@ok pitch command okay !
password 1
password is corrected
3rd control start:
@ok pitch command okay !
set input1 input_mute 1 1
@ok pitch command okay !
█
```

**Known issue with Putty Tool**

- Missing "3" when the first input 3rdStart. Other tools, such as Window10 Telnet client, no this issue.

```
Welcome to the DM8500 Text Potocol Server...
Try 'help' for more information.
3rdStart
rd control start:
please input the correct username and password
█
```

## Previous Version Release History

### DM 8500 V4.2 Release Note

#### 1. DM Designer V4.2 for Windows Release Notes

##### Version Compatibility

Firmware/ Designer Version	Publish Date	Publisher	Version Compatibility List
DM Designer V4.2	2021/10/27	Xibo.luo	1. All DM8000 firmware versions. 2. DM8500 firmware V3.2.X.X 3. DM8500 firmware V3.3.X.X 4. DM8500 firmware V3.4.X.X 5. DM8500 firmware V3.5.X.X 6. DM8500 firmware V3.6.X.X 7. DM8500 firmware V3.7.X.X 8. DM8500 firmware V3.8.X.X 9. DM8500 firmware V4.2.X.X
DM firmware V4.2.0.2	2021/10/27	Asar Chen	Designer version V4.2.X.X

##### System Requirements for Software

OS	Windows 7 (32-bit/64-bit) Windows 10 (32-bit/64-bit)
CPU	Pentium/Athlon 2GHz or faster (dual core processor recommended)
Memory	1 GB or more
Interface	Ethernet Port

##### Fixed Bugs

- Fixed the Signal Path Identifier for Multi-DSP modules as following:
  - Equalizer parametric
  - Octave Graphic
  - High pass filter
  - Low pass filter
  - High shelf

- Low Shelf
- All pass filter
- CrossOver
- Leveler
- Complimiter
- Ducker
- Noise Gate
- Source selection

## **2. DM8500 V4.2.0.2 Firmware Release Notes**

### **Fixed Bugs**

- Fixed the “page jump” issue in Web Service.
- Fixed the “power/Standby button response is too slow of Lab-Gruppen D series Amplifiers” issue.
- Fixed the multi-DSP of Router module issue.

## **DM 8500 V3.8.2 Release Note**

### **1.DM Designer V3.8.2 for Windows Release Notes**

This version is mainly for bug fixing, it's no big version upgrade, so it still keeps previous version compatibility.

### **Fixed Bugs**

- Upload files in Audio player module the file size refresh slow issue.

## **2. DM8500 V3.8.2.1 Firmware Release Notes**

### **Fixed Bugs**

- Preset button sync issue in Web server.
- Save as over 2M size file from DM8500, the device network will be disconnected.

## **DM 8500 V3.8.1 Release Note**

### **1.DM Designer V3.8.1 for Windows Release Notes**

#### **Version Compatibility**

Firmware/ Designer	Publish Date	Publisher	Version Compatibility List
-----------------------	-----------------	-----------	----------------------------

Version			
DM Designer V3.8.1	2021/6/8	Xibo.luo	<ol style="list-style-type: none"> <li>1. All DM8000 firmware versions.</li> <li>2. DM8500 firmware V3.2.X.X</li> <li>3. DM8500 firmware V3.3.X.X</li> <li>4. DM8500 firmware V3.4.X.X</li> <li>5. DM8500 firmware V3.5.X.X</li> <li>6. DM8500 firmware V3.6.X.X</li> <li>7. DM8500 firmware V3.7.X.X</li> <li>8. DM8500 firmware V3.8.X.X</li> </ol>
DM firmware V3.8.1.3	2021/6/9	Asar Chen	Designer version V3.8.X.X

#### System Requirements for Software

OS	Windows 7 (32-bit/64-bit) Windows 10 (32-bit/64-bit)
CPU	Pentium/Athlon 2GHz or faster (dual core processor recommended)
Memory	1 GB or more
Interface	Ethernet Port

#### New Features

- Add 3<sup>rd</sup> party options: Compatible DM8000 ON and Compatible DM8000 OFF.

## **2. DM8500 V3.8.1.3 Firmware Release Notes**

#### Main Features

- Support 3<sup>rd</sup> party module for compatible with DM8000.
- Force output network status and serial port configuration to serial port with baud rate =115200.
- Fixed bugs for viewer user in 3<sup>rd</sup> party interface.
- Forbidden "set ipconfig command" in 3<sup>rd</sup> part interface.

## **DM 8500 V3.7.1 Release Note**

This version is mainly for bug fixing, it's no big version upgrade, so it still keeps previous version compatibility.

## **1. DM Designer V3.7.1 for Windows Release Notes**

### **System Requirements for Software**

OS	Windows 7 (32-bit/64-bit) Windows 10 (32-bit/64-bit)
CPU	Pentium/Athlon 2GHz or faster (dual core processor recommended)
Memory	1 GB or more
Interface	Ethernet Port

### **Fixed Bugs**

- Check the designer compile rule for logic.
- Fixed the bug for preset is none when there is command string module.
- Check the Maximum support logic inputs and give the prompting message.
- Check the Maximum support Command string modules and give the prompting message.

## **2. DM8500 V3.7.1.9 Firmware Release Notes**

### **Main Features**

- Fixed bug for GPIO value after reboot or power OFF/ON DM8500 device.
- Fixed bug for preset recall is not right for router module at some case.
- Fixed bug for Maximum support 16 Command String modules.
- Change DSP Memory assigning for Logic data.

## **DM8500 V3.7 Release Note**

### **1. Version Compatibility**

<b>Firmware/ Designer Version</b>	<b>Publish Date</b>	<b>Publisher</b>	<b>Version Compatibility List</b>
DM Designer V3.7.0.5	2021/1/15	Xibo.luo	1. All DM8000 firmware versions. 2. DM8500 firmware V3.2.X.X 3. DM8500 firmware V3.3.X.X 4. DM8500 firmware V3.4.X.X

			5. DM8500 firmware V3.5.X.X 6. DM8500 firmware V3.6.X.X 7. DM8500 firmware V3.7.X.X
DM firmware V3.7.1.0	2021/1/14	Asar Chen	Designer version V3.7.X.X

## 2. DM Designer V3.7.0.5 for Windows Release Notes

### System Requirements for Software

OS	Windows 7 (32-bit/64-bit) Windows 10 (32-bit/64-bit)
CPU	Pentium/Athlon 2GHz or faster (dual core processor recommended)
Memory	1 GB or more
Interface	Ethernet Port

### Main Features

- Add Command String with network mode.
- Add Signal Present Meter logic output.

### Fixed Features

- Fixed software install issue in Window10.
- Fixed Dante control display bugs.
- Fixed some internal bugs.

## 3. DM8500 V3.7.1.0 Firmware Release Notes

### Main Features

- Firmware supports Command String with network mode
- Firmware supports Signal Present Meter logic output.

## DM8500 V3.6 Release Note

### 1. Version Compatibility

Firmware/	Publish	Publisher	Version Compatibility List
-----------	---------	-----------	----------------------------



<b>Designer Version</b>	<b>Date</b>		
DM Designer V3.6.1.4	2020/10/22	Xibo.luo	<ol style="list-style-type: none"> <li>1. All DM8000 firmware versions.</li> <li>2. DM8500 firmware V3.2.X.X</li> <li>3. DM8500 firmware V3.3.X.X</li> <li>4. DM8500 firmware V3.4.X.X</li> <li>5. DM8500 firmware V3.5.X.X</li> <li>6. DM8500 firmware V3.6.X.X</li> </ol>
DM firmware V3.6.1.0	2020/10/29	Asar Chen	Designer version V3.6.X.X

## **2. DM Designer V3.6.1.4 for Windows Release Notes**

### **System Requirements for Software**

OS	Windows 7 (32-bit/64-bit) Windows 10 (32-bit/64-bit)
CPU	Pentium/Athlon 2GHz or faster (dual core processor recommended)
Memory	1 GB or more
Interface	Ethernet Port

### **Main Features**

- Add Mono, Stereo and multi-channel channel option for these modules:

- Matrix Mixer
- Matrix Mixer with delay
- Equalizer parametric
- Octave Graphic
- High pass filter
- Low pass filter
- High shelf
- Low Shelf
- All pass filter
- CrossOver
- Leveler
- Complimiter
- Ducker

- Noise Gate
  - Source selection
  - Router
- Add Serial port settings.
  - Add Command String by serial port.
  - Add Help.

### **3. DM8500 Firmware Release Notes**

#### **Main Features**

- DSP support Mono, Stereo and multi-channel channel option for these modules:
  - Matrix Mixer
  - Matrix Mixer with delay
  - Equalizer parametric
  - Octave Graphic
  - High pass filter
  - Low pass filter
  - High shelf
  - Low Shelf
  - All pass filter
  - CrossOver
  - Leveler
  - Complimiter
  - Ducker
  - Noise Gate
  - Source selection
  - Router
- Add Command String by serial port.
- Add 3<sup>Rd</sup> part command by serial port
- DSP MIPS revaluation

#### **Fixed Issues**

- After copy and delete "Pass Through" modules, sometimes no output.
- AEC 3 to AEC 6 adv can't display right signal.
- 3<sup>Rd</sup> party command bug.
- Some internal bugs.

## **DM8500 V3.5 Release Note**

### 1. Version Compatibility

<b>Firmware/ Designer Version</b>	<b>Publish Date</b>	<b>Publisher</b>	<b>Version Compatibility List</b>
DM Designer V3.5.0.6	2020/6/24	Kevin	<ol style="list-style-type: none"> <li>1. All DM8000 firmware versions.</li> <li>2. DM8500 firmware V3.2.X.X</li> <li>3. DM8500 firmware V3.3.X.X</li> <li>4. DM8500 firmware V3.4.X.X</li> <li>5. . DM8500 firmware V3.5.X.X</li> </ol>
DM firmware V3.5.0.6	2020/6/24	Asar Chen	Desinger version V3.5.X.X

## **2. DM Designer V3.5.0.6 for Windows Release Notes**

### **System Requirements for Software**

OS	Windows 7 (32-bit/64-bit) Windows 10 (32-bit/64-bit)
CPU	Pentium/Athlon 2GHz or faster (dual core processor recommended)
Memory	1 GB or more
Interface	Ethernet Port

### **Main Features**

- Add Audio Player and Audio Recorder under Input Output module list.
- Add Calendar with logic output under Control module list.
- Add Amplifiers with Lab Gruppen D Series module as a new category.
- Add Dante Control feature under system menu.
- Removing the multiple instances of mixers, routers and so on in the modules lists.

## **3. DM8500 Firmware Release Notes**

### **Main Features**

1. Support Audio Player, Audio Recorder and support logic input to active this function.
2. Support Calendar and also support calendar logic output to active events.
3. Support Lab Gruppen D Series module. Now support D10:4L, D20:4L, D40:4L three

modules.

## DM8500 V3.2 Release Note

### 1. Version Compatibility

Firmware/ Designer Version	Publish Date	Publisher	Version Compatibility List	GIT Commit Date	Com ments
DM Designer V3.2.6	2020/1/14	Kevin	1. All DM8000 firmware versions.  2. DM8500 firmware V3.2.X.X		
DM firmware V3.2.0.17	2020/1/10	Asar Chen	Desinger version  V3.2.X.X	CPU_APP:20200103_3.2.1.19  PP_DSP: 20201010_0.0.1.4  AEC_DSP:20200110_0.0.1.5  FPGA: 20191226_0.2.0.14	

### 2. DM Designer V3.2.6 for Windows Release Notes

#### System Requirements for Software

OS	Windows 7 (32-bit/64-bit) Windows 10 (32-bit/64-bit)
CPU	Pentium/Athlon 2GHz or faster (dual core processor recommended)
Memory	1 GB or more
Interface	Ethernet Port

#### Main Features

- Support both DM8500 and DM8000 devices.
- Compatible with DM8000 V3.1 and previous versions.
- Powerful designer for DM8500 device

### **3. DM8500 Firmware Release Notes**

#### **Main Features**

1. Support the 64 channel Dante inputs and outputs
2. Support 24 channel 150ms AEC or 12 channel 300ms AEC.
3. High high-heedroom analogue Mic/line inputs
4. High speed USB audio.
5. Powerful DSP function and supports all feature likes DM8000.
6. Embedded HTML engine to serve custom control pages.